

# STRAGONA EQUESTRIAN CENTER



## STRZEGOM SPRING OPEN HORSE ARRIVAL PROTOCOL

### ARRIVAL TIME:

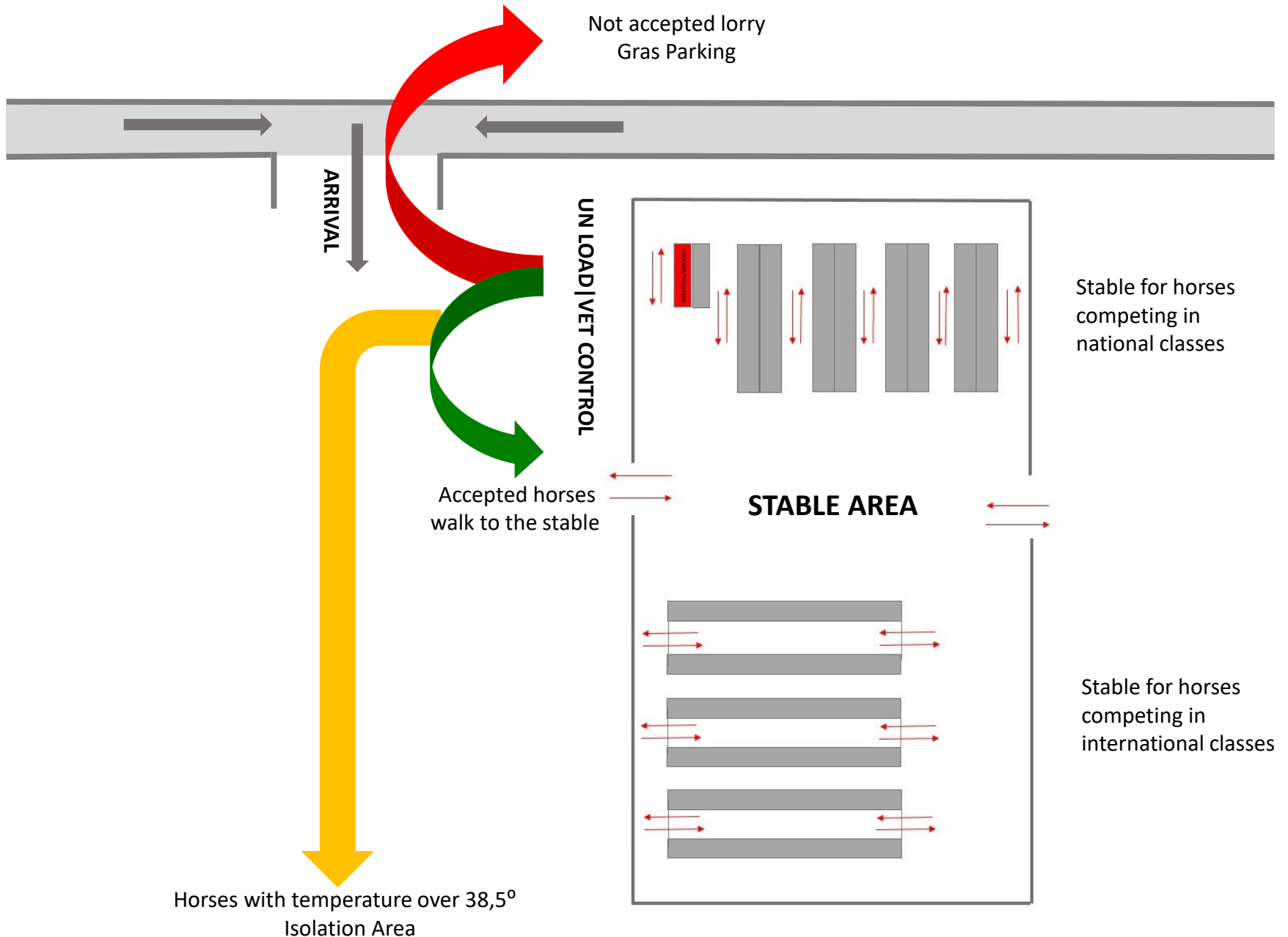
**Wednesday: 15.00-20.00**

**Thursday: 7.00-13.00 & 14.00-19.00**

**THERE IS NOT POSSIBILITY TO ARRIVE AT OTHER TIME**

**Please ensure that you start travel from home with sufficient time  
to avoid late arrival !!!**

# STRAGONA EQUESTRIAN CENTER



# STRAGONA EQUESTRIAN CENTER

In reference to the FEI regulations about the arrangement of horses in stables, competitors who take part in both competitions - international and national - and want their horses to stay in one stable are obliged to purchase an FEI license for a horse participating in national competitions before the deadline for the entries. They are obliged to comply with all phytosanitary recommendations as well as for horses competing in international competitions, including the FEI HORSE APP.

## DOCUMENTS REQUIRED FOR VET CONTROL

- **HORSE PASSPORT**
- **TRACES CERTIFICATE /ONLY THE HORSES FROM ABROAD/**  
Please tell the government VET that when he will be preparing needed papers for the horses in computer, the trace number will be given automatic by the system when the Vet find us as organizer LKS Stragona.  
Please make a notice that he need to check if the address is correct: Morawa 36, 58-150 Strzegom.  
Sometimes there were situations that they choose wrong address.

- **EQUINE HEALTH SELF-CERTIFICATION & TEMPERATURE RECORDING**  
**Horse Health Status Self-declaration including horse rectal temperatures for the 3 days before arrival to the event, both entered in the FEI HorseApp**

# STRAGONA EQUESTRIAN CENTER

## HORSE ARRIVAL PROCEDURE

Prior to arrival: Athlete/Groom announce their arrival time in advance



On arrival: **Check Point - Stable Manager:** Stables allocation  
All horse passports collected by Stable Manager/stable personnel  
(identify all horses from the same truck and keep passports together)



Unloading of horses from the truck, horses placed in allocated stables. Athlete/Groom takes the horse's temperature in its stable under the surveillance of an FEI Veterinarian assigned by the Veterinary Delegate (VD).

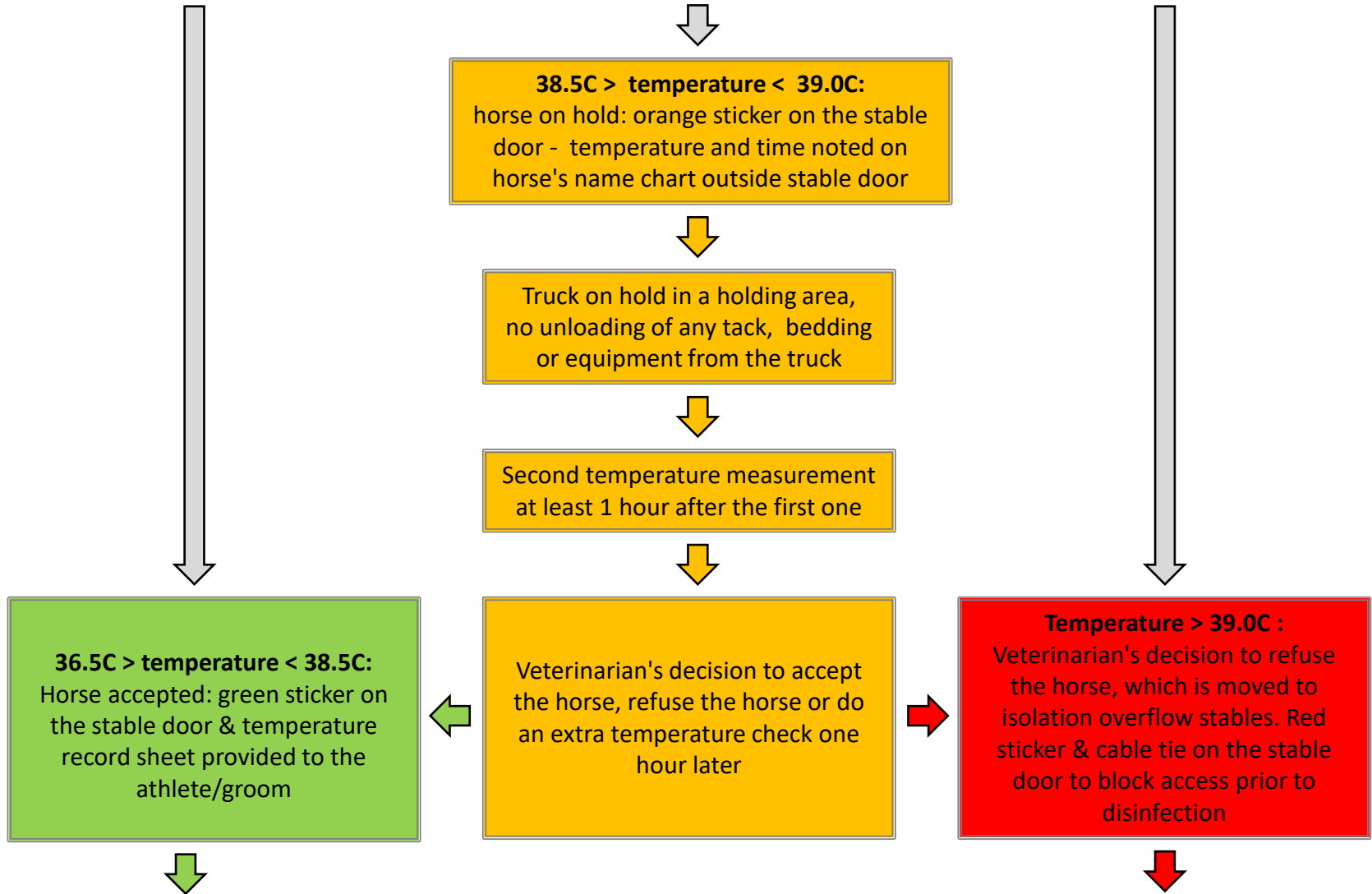
**FEI Veterinarian scans the horse's microchip to establish ID (using Bluetooth microchip reader & FEI HorseApp), checks for any other signs of infectious disease and equine influenza vaccinations (as indicated by FEI Veterinary Regulations) and records the horse's temperature in the FEI HorseApp.**

**NO HORSE ALLOWED TO LEAVE ITS STABLE UNTIL A CORRECT TEMPERATURE MEASUREMENT IS RECORDED**



# STRAGONA EQUESTRIAN CENTER

## HORSE ARRIVAL PROCEDURE



# STRAGONA EQUESTRIAN CENTER

## HORSE ARRIVAL PROCEDURE

